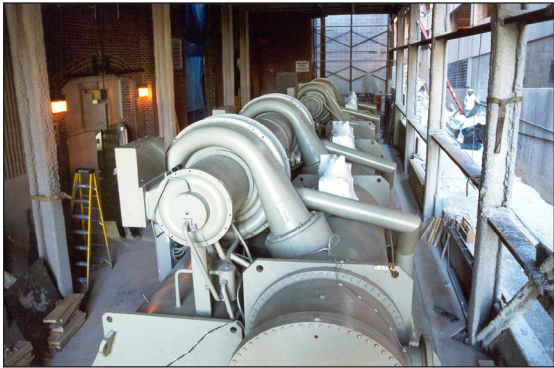


Johns Hopkins University Hospital Central Power Plant Addition

Baltimore, Maryland



Bell provided general construction services for a steel frame and masonry addition to the existing hospital power plant.

Housing two 2,700-ton chillers, the addition also included tie-ins to the existing chilled water system. A third-story addition to house new electrical services, and miscellaneous plant infrastructure upgrades were also included.

*Client The Johns Hopkins Hospital
- Facilities*

Owner The Johns Hopkins Hospital

Contract Value \$5.5 million

Contract Type..... Firm Fixed Price

Architect/Engineer..... RMF Engineers