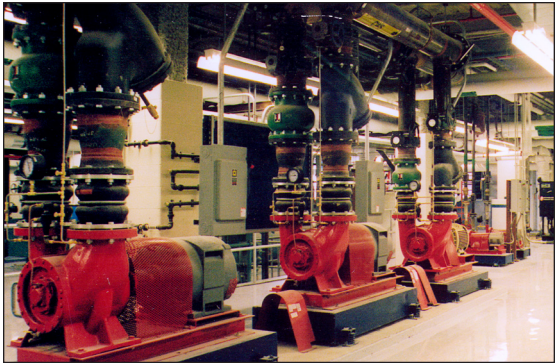




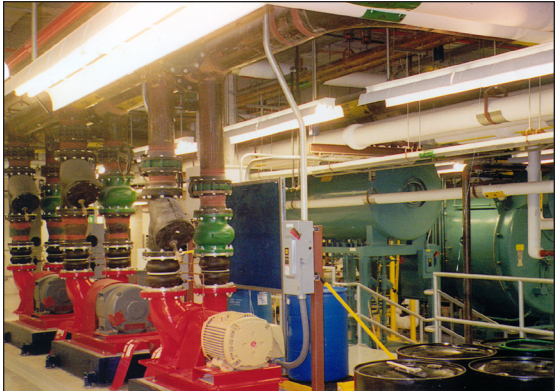
Johnson & Johnson Ortho-Diagnostics Research and Development Facility

Rochester, New York



Bell provided mechanical and electrical installation for this new 120,000-square-foot laboratory research facility.

The scope of work included all the HVAC equipment, piping, sheetmetal and automatic temperature controls. The HVAC equipment included two new 600 HP steam boilers, two 500 ton chillers, two roof top cooling towers, built up AHU's in the penthouse and an additional process cooling system. Electrical scope covered all power and lighting, fire alarm, teledata, heat trace and snow melt systems.



The laboratories are equipped with fume hoods, specialty gases, autoclaves, RO/DI water and a labwaste system to a neutralization tank in the mechanical equipment room.

Client Turner Construction Company
Owner Johnson & Johnson
Subcontract Value \$8 million
Contract Type Firm Fixed Price
Architect/Engineer The Hillier Group